



SCPH-100 SERIES

# SERVICE MANUAL

2nd Edition



PSone™



Sony Computer Entertainment Inc.  
Customer Service Department

**Notice**

This manual is copyrighted by Sony Computer Entertainment Inc. All rights Reserved.

No re-produced or transferred required except permission by Sony Computer Entertainment Inc.

No commercial use and rental required.

**Revisions**

This manual compiled by 2nd edition of SCPH-100's Design data.

Design and specifications will be subject to change without notice.

So, the latest versions of Service Manual, Technical Memo and SCEI. Service Promotion Dept.'s Home Page "PS SERVICE PLAZA" should be used together with this manual.

PS SERVICE PLAZA web site: <http://svc.scei.sony.co.jp/>

**TABLE OF CONTENTS**

**1. SPECIFICATIONS** ..... 1-1

**2. EXPLODED VIEW**

2-1. Main Block ..... 2-1

**3. BLOCK DIAGRAMS**

3-1. Overall Block Diagram ..... 3-1

**4. DIAGRAMS**

4-1. Printed Wiring Board (PM-41 (-21/-31) Board) ..... 4-1

4-2. Schematic Diagram (PM-41 (-21/-31) Board (1/6)) ..... 4-3

4-3. Schematic Diagram (PM-41 (-21/-31) Board (2/6)) ..... 4-5

4-4. Schematic Diagram (PM-41 (-21/-31) Board (3/6)) ..... 4-7

4-5. Schematic Diagram (PM-41 (-21/-31) Board (4/6)) ..... 4-9

4-6. Schematic Diagram (PM-41 (-21/-31) Board (5/6)) ..... 4-11

4-7. Schematic Diagram (PM-41 (-21/-31) Board (6/6)) ..... 4-13

**5. ELECTRICAL PARTS LIST**

• PM-41 Board ..... 5-1

## SECTION 1 SPECIFICATIONS

### SCPH-100

#### **General**

Power requirements

DC IN 7.5 V

Power consumption

9 W

Dimensions

193 × 36 × 143 mm (w/h/d)

Mass

550 g

Operating Temperature

5°C - 35°C

Laser diode properties

- Material : GaAlAs
- Wavelength : λ=780 nm
- Emission duration : Continuous
- Laser output : Less than 44.6 μW  
*(measured at a distance of 200 mm from the lens surface on the optical pick-up block)*

#### **Inputs/outputs on the front**

Controller ports (2)

MEMORY CARD slots (2)

#### **Outputs on the rear**

AV MULTI OUT connector (1)

#### **AC power adaptor**

Power requirements

100 V AC, 50/60 Hz

Output voltage and current

7.5 V, 2.0 A max.

Dimensions

50 × 27 × 78 mm (w/h/d)

Mass

160 g

#### **Supplied accessories**

AC Adaptor (1)

AV Cable

(integrated audio/video) (1)

Analog Controller

(DUALSHOCK™) (1)

Instruction Manual (1)

Design and specifications are subject to change without notice.

### SCPH-101

#### **General**

Power requirements

DC IN 7.5 V

Power consumption

9 W

Dimensions

193 × 38 × 144 mm (w/h/d)

(7 5/8 × 1 1/2 × 5 3/4 inches)

Mass

560 g (1 lb 3 oz)

Operating Temperature

41°F - 95°F (5°C - 35°C)

Laser diode properties

- Material : GaAlAs
- Wavelength : λ=780 nm
- Emission duration : Continuous
- Laser output : Less than 44.6 μW  
*(measured at a distance of 200 mm from the lens surface on the optical pick-up block)*

#### **Inputs/outputs on the front**

Controller ports (2)

MEMORY CARD slots (2)

#### **Outputs on the rear**

AV MULTI OUT connector (1)

#### **Supplied accessories**

AC Adaptor (1)

AV Cable

(integrated audio/video) (1)

Analog Controller

(DUALSHOCK™) (1)

Instruction Manual (1)

Design and specifications are subject to change without notice.

### SCPH-102

#### **General**

Power requirements

DC IN 7.5 V

Power consumption

9 W

Dimensions

193 × 38 × 144 mm (w/h/d)

Mass

560 g

Operating Temperature

41°F - 95°F (5°C - 35°C)

Laser diode properties

- Material : GaAlAs
- Wavelength : λ=780 nm
- Emission duration : Continuous
- Laser output : Less than 44.6 μW  
*(measured at a distance of 200 mm from the lens surface on the optical pick-up block)*

#### **Inputs/outputs on the front**

Controller ports (2)

MEMORY CARD slots (2)

#### **Outputs on the rear**

AV MULTI OUT connector (1)

#### **Supplied accessories**

AC Adaptor (1)

AV Cable

(integrated audio/video) (1)

Analog Controller

(DUALSHOCK™) (1)

Instruction Manual (1)

Design and specifications are subject to change without notice.

## SECTION 2 EXPLODED VIEW

**NOTE:**

- The mechanical parts with no reference number in the exploded views are not supplied.
- -XX and -X mean standardized parts, so they may have some difference from the original one.
- Accessories and packing materials are given in the last of this parts list.

The components identified by mark  $\Delta$  or dotted line with mark.  $\Delta$  are critical for safety. Replace only with part number specified.

Les composants identifiés par une marque  $\Delta$  sont critiques pour la sécurité. Ne les remplacer que par une pièce portant le numéro spécifié.

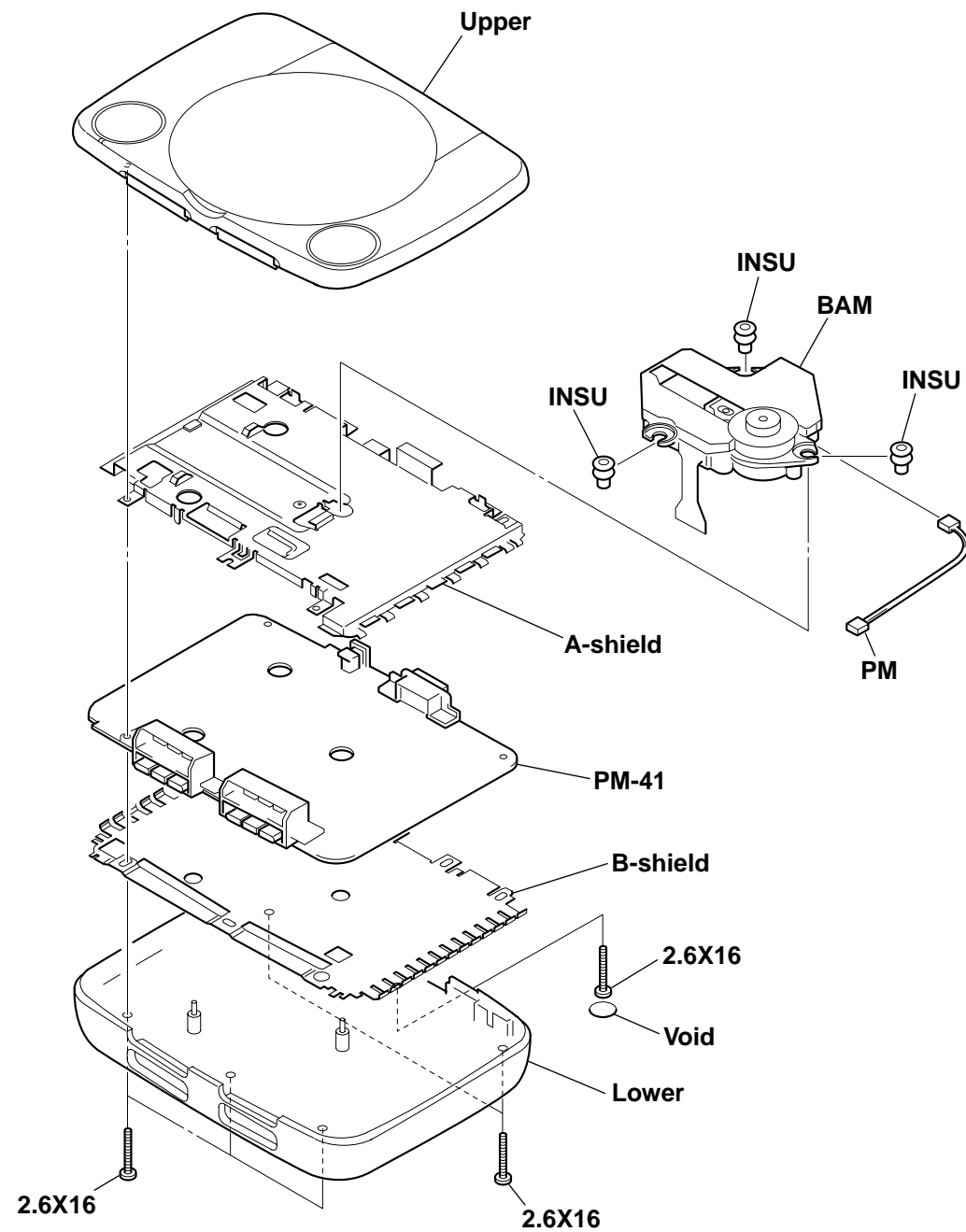
**NOTE:**

- SC Classification :  
S : Stocked parts    U : Unsupplied parts  
O : Ordered parts

**CAUTION**

Use of controls or adjustments or performance of procedures other than those specified herein may result in hazardous radiation exposure.

### 2-1. MAIN BLOCK



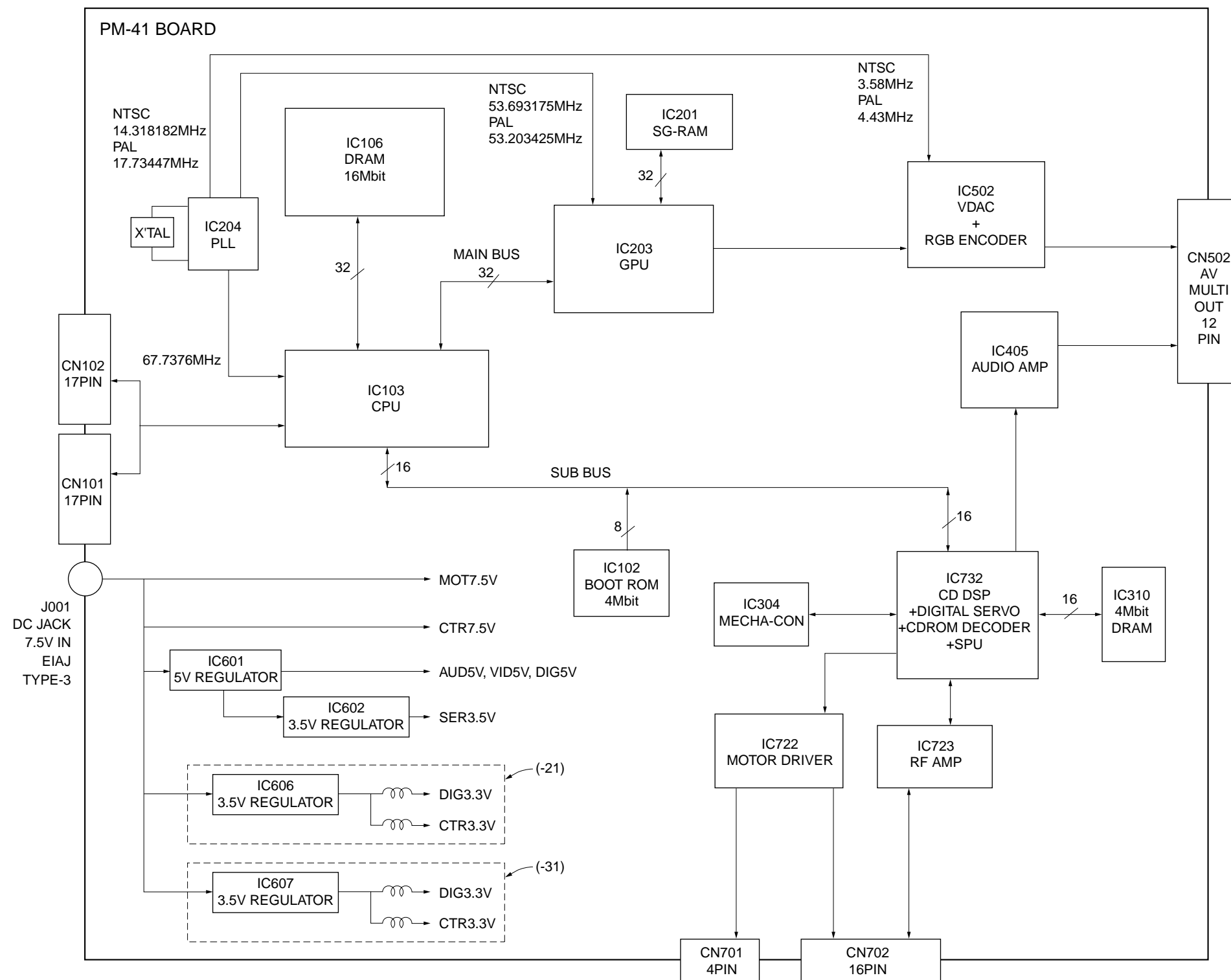
SC	Ref. No.	Part No.	Description	Remark
O	A-shield	X-3950-906-1	SHIELD (A) ASSY	
O	B-shield	3-063-429-01	SHIELD (B)	
S $\Delta$	BAM	8-820-135-01	DEVICE, OPTICAL KSM-440BAM/C1NP	
S	INSU	3-965-376-11	INSULATOR	
O	Lower	X-3950-801-1	CABINET (LOWER) ASSY (101)	
O	Lower	X-3950-806-1	CABINET (LOWER) ASSY (102)	
O	PM	1-954-377-31	HARNESS (PM-86)	
O $\Delta$	PM-41	A-6713-768-A	PM-41 BOARD, COMPLETE (101)	
O $\Delta$	PM-41	A-6713-776-A	PM-41 BOARD, COMPLETE (102)	
O	Upper	X-3950-800-1	CABINET (UPPER) ASSY (101)	
O	Upper	X-3950-904-1	CABINET (UPPER) ASSY (102)	
O	Void	3-065-630-01	TAPE (B), VOID (101)	
O	Void	3-065-656-01	TAPE (C), VOID (102)	
O	2.6X16	3-063-705-01	SCREW (2.6X16), TAPPING	

The components identified by mark  $\Delta$  or dotted line with mark.  $\Delta$  are critical for safety. Replace only with part number specified.

Les composants identifiés par une marque  $\Delta$  sont critiques pour la sécurité. Ne les remplacer que par une pièce portant le numéro spécifié.


### SECTION 3 BLOCK DIAGRAMS

#### 3-1. OVERALL BLOCK DIAGRAM





#### THIS NOTE IS COMMON FOR PRINTED WIRING BOARDS AND SCHEMATIC DIAGRAMS.

##### Note on Printed Wiring Boards :

- Through hole is omitted.
-  : Pattern on the side which is seen.
- Chip parts.



##### Note on Schematic Diagram :

- Caution when replacing chip parts. New parts must be attached after removal of chip. Be careful not to heat the minus side of tantalum capacitor, because it is damaged by the heat.
- All capacitors are in  $\mu\text{F}$  unless otherwise noted.  $\text{pF}$  :  $\mu\text{F}$  50 WV or less are not indicated except for electrolytics and tantalums.
- All resistors are in  $\Omega$  and 1/16 W or less unless otherwise specified.
- Chip resistor are 1/10 W or 1/16 W unless otherwise noted.  $\text{k}\Omega$  : 1000  $\Omega$ ,  $\text{M}\Omega$  : 1000  $\text{k}\Omega$ .
-  : B+ Line. \*
-  : IN/OUT direction of (+, -) B LINE. \*
- Circled numbers refer to waveforms. \*
- \* Indicated by the color red.

##### Note :

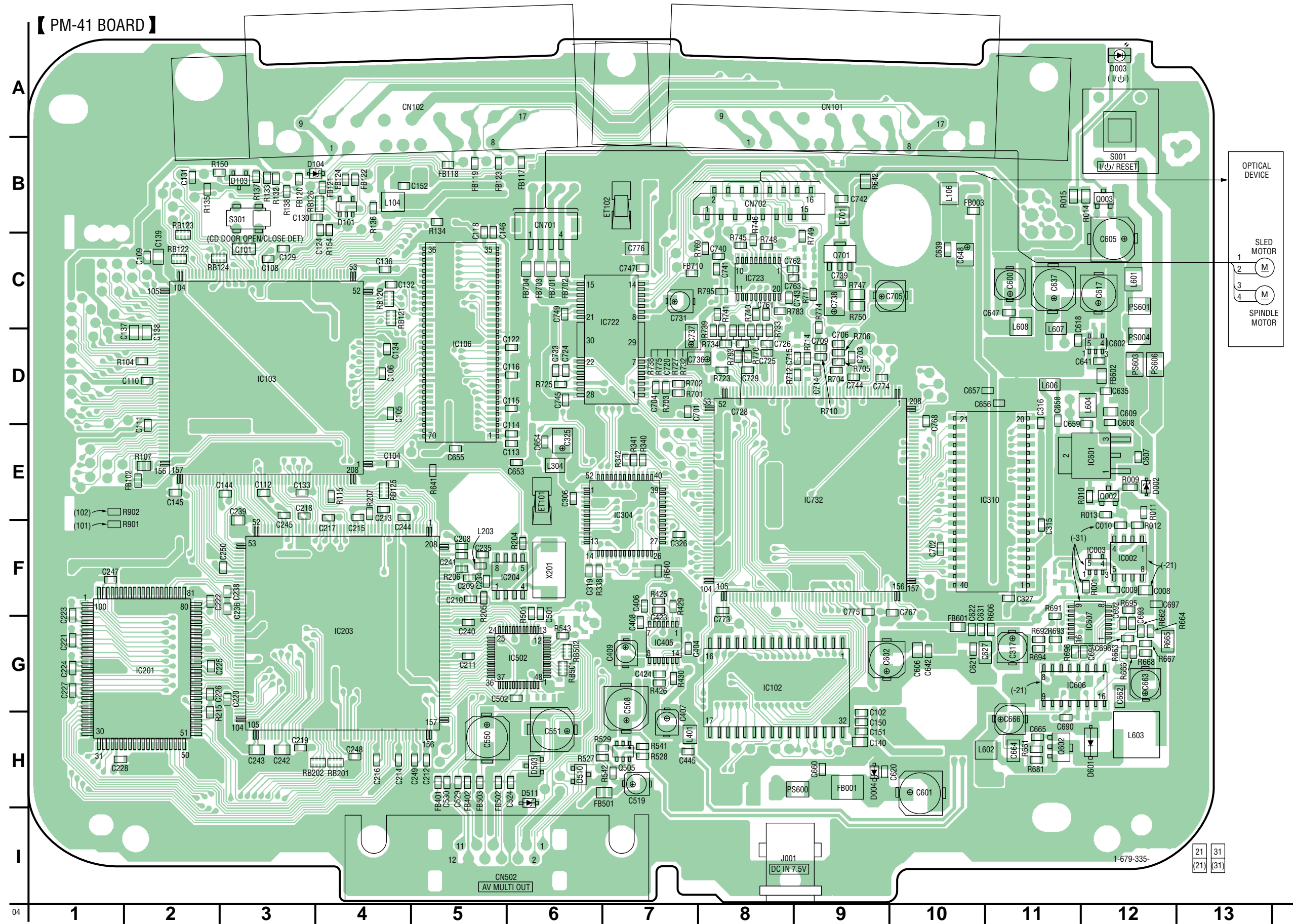
The components identified by mark  $\Delta$  or dotted line with mark  $\Delta$  are critical for safety. Replace only with part number specified.

##### Note :

Les composants identifiés par une marque  $\Delta$  sont critiques pour la sécurité. Ne les remplacer que par une pièce portant le numéro spécifié.

### SECTION 4 DIAGRAMS

4-1. PRINTED WIRING BOARD (PM-41 (-21/-31) BOARD)





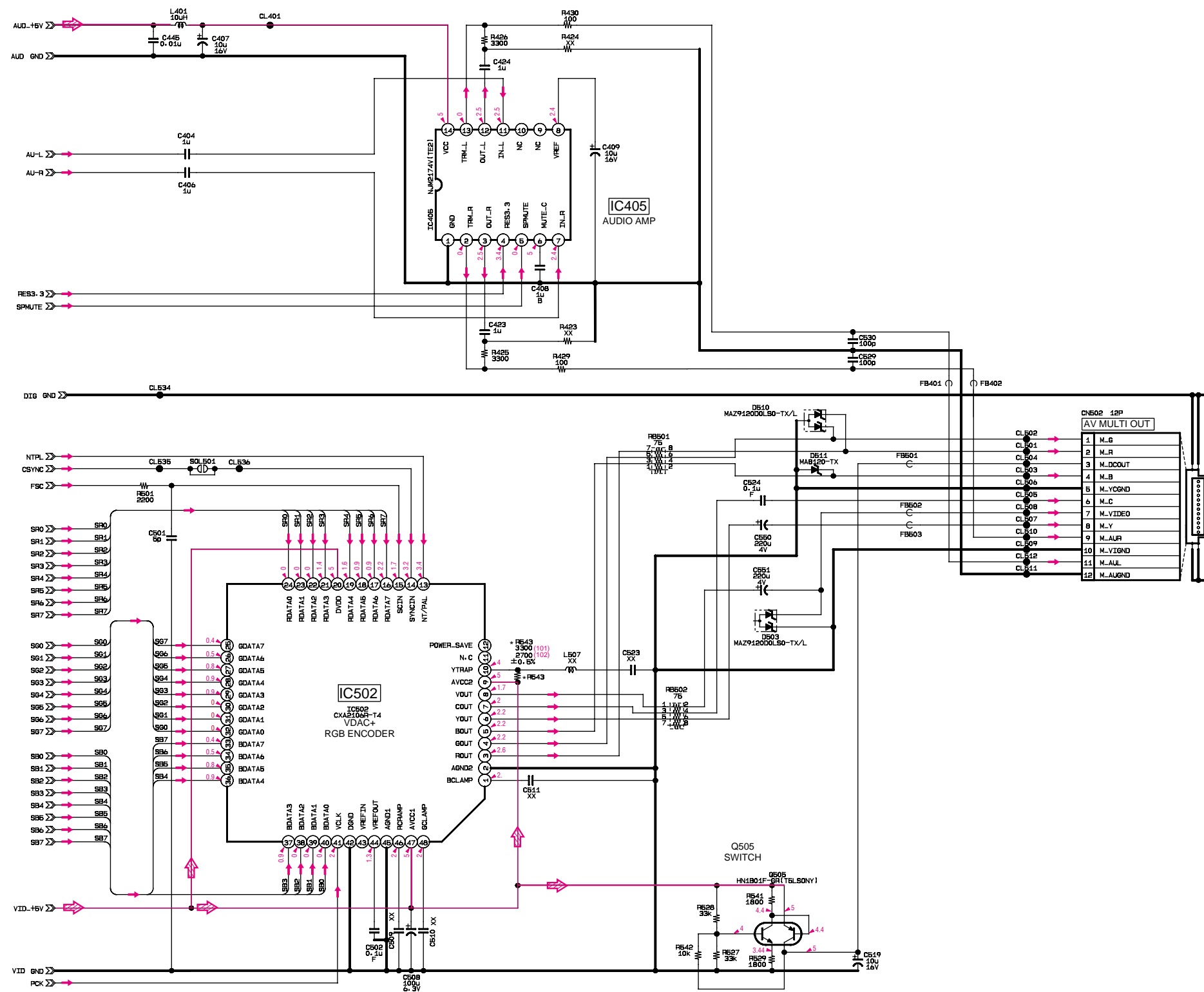






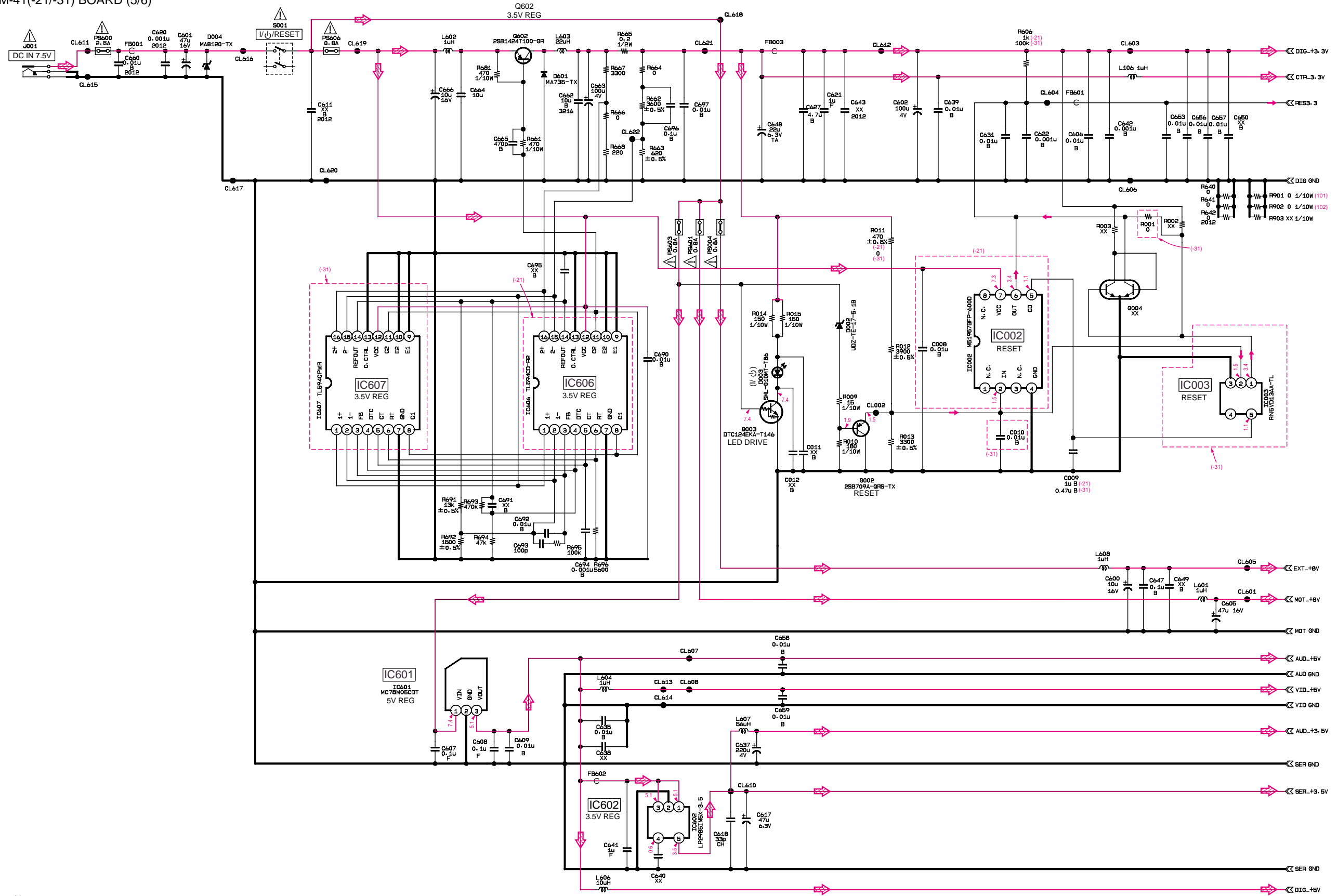
### 4-5. SCHEMATIC DIAGRAM (PM-41 (-21/-31) BOARD (4/6))

PM-41(-21/-31) BOARD (4/6)



### 4-6. SCHEMATIC DIAGRAM (PM-41 (-21/-31) BOARD (5/6))

PM-41(-21/-31) BOARD (5/6)





## SECTION 5 ELECTRICAL PARTS LIST

**NOTE:**

- Due to standardization, replacements in the parts list may be different from the parts specified in the diagrams or the components used on the set.
- -XX and -X mean standardized parts, so they may have some difference from the original one.
- RESISTORS  
METAL: Metal-film resistor.  
F: nonflammable
- SEMICONDUCTORS  
In each case, u :  $\mu$ , for example:  
uA.. :  $\mu$ A.. uPA.. :  $\mu$ PA..  
uPB.. :  $\mu$ PB.. uPC.. :  $\mu$ PC.. uPD.. :  $\mu$ PD..

- CAPACITORS  
uF :  $\mu$ F
- COILS  
uH :  $\mu$ H

When indicating parts by reference number, please include the board.

**NOTE:**  
• SC Classification :  
S : Stocked parts  
O : Ordered parts  
U : Unsupplied parts

The components identified by mark  $\Delta$  or dotted line with mark.  $\Delta$  are critical for safety.  
Replace only with part number specified.

Les composants identifiés par une marque  $\Delta$  sont critiques pour la sécurité.  
Ne les remplacer que par une pièce portant le numéro spécifié.

SC	Ref. No.	Part No.	Description	Remark	SC	Ref. No.	Part No.	Description	Remark
O $\Delta$		A-6713-768-A	PM-41 BOARD, COMPLETE (101)		O	C151	1-162-970-11	CERAMIC CHIP 0.01uF 10%	25V
O $\Delta$		A-6713-776-A	PM-41 BOARD, COMPLETE (102)		O	C152	1-162-970-11	CERAMIC CHIP 0.01uF 10%	25V
		*****			O	C208	1-164-156-11	CERAMIC CHIP 0.1uF	25V
		< CAPACITOR >			O	C209	1-164-156-11	CERAMIC CHIP 0.1uF	25V
O	C008	1-163-021-91	CERAMIC CHIP 0.01uF 10%	50V (-21)	O	C210	1-164-156-11	CERAMIC CHIP 0.1uF	25V
O	C009	1-125-837-91	CERAMIC CHIP 1uF 10%	6.3V (-21)	O	C211	1-162-964-11	CERAMIC CHIP 0.001uF 10%	50V
O	C009	1-125-891-11	CERAMIC CHIP 0.47uF 10%	10V (-31)	O	C212	1-162-970-11	CERAMIC CHIP 0.01uF 10%	25V
O	C010	1-162-970-11	CERAMIC CHIP 0.01uF 10%	25V (-31)	O	C213	1-164-156-11	CERAMIC CHIP 0.1uF	25V
O	C101	1-125-764-41	CERAMIC CHIP 100PF	50V	O	C214	1-164-156-11	CERAMIC CHIP 0.1uF	25V
O	C102	1-162-964-11	CERAMIC CHIP 0.001uF 10%	50V	O	C215	1-164-156-11	CERAMIC CHIP 0.1uF	25V
O	C104	1-162-964-11	CERAMIC CHIP 0.001uF 10%	50V	O	C216	1-162-964-11	CERAMIC CHIP 0.001uF 10%	50V
O	C105	1-162-964-11	CERAMIC CHIP 0.001uF 10%	50V	O	C217	1-164-156-11	CERAMIC CHIP 0.1uF	25V
O	C106	1-162-964-11	CERAMIC CHIP 0.001uF 10%	50V	O	C218	1-164-156-11	CERAMIC CHIP 0.1uF	25V
O	C108	1-162-964-11	CERAMIC CHIP 0.001uF 10%	50V	O	C219	1-164-156-11	CERAMIC CHIP 0.1uF	25V
O	C109	1-162-964-11	CERAMIC CHIP 0.001uF 10%	50V	O	C220	1-164-156-11	CERAMIC CHIP 0.1uF	25V
O	C110	1-162-964-11	CERAMIC CHIP 0.001uF 10%	50V	O	C221	1-164-156-11	CERAMIC CHIP 0.1uF	25V
O	C111	1-162-964-11	CERAMIC CHIP 0.001uF 10%	50V	O	C222	1-164-156-11	CERAMIC CHIP 0.1uF	25V
O	C112	1-164-156-11	CERAMIC CHIP 0.1uF	25V	O	C223	1-164-156-11	CERAMIC CHIP 0.1uF	25V
O	C113	1-164-156-11	CERAMIC CHIP 0.1uF	25V	O	C224	1-164-156-11	CERAMIC CHIP 0.1uF	25V
O	C114	1-162-964-11	CERAMIC CHIP 0.001uF 10%	50V	O	C225	1-164-156-11	CERAMIC CHIP 0.1uF	25V
O	C115	1-162-970-11	CERAMIC CHIP 0.01uF 10%	25V	O	C226	1-164-156-11	CERAMIC CHIP 0.1uF	25V
O	C116	1-162-927-11	CERAMIC CHIP 100PF 5%	50V	O	C227	1-164-156-11	CERAMIC CHIP 0.1uF	25V
O	C118	1-162-927-11	CERAMIC CHIP 100PF 5%	50V	O	C228	1-164-156-11	CERAMIC CHIP 0.1uF	25V
O	C122	1-162-964-11	CERAMIC CHIP 0.001uF 10%	50V	O	C234	1-164-156-11	CERAMIC CHIP 0.1uF	25V
O	C124	1-115-156-11	CERAMIC CHIP 1uF	10V	O	C235	1-162-964-11	CERAMIC CHIP 0.001uF 10%	50V
O	C129	1-162-927-11	CERAMIC CHIP 100PF 5%	50V	O	C236	1-162-964-11	CERAMIC CHIP 0.001uF 10%	50V
O	C130	1-162-927-11	CERAMIC CHIP 100PF 5%	50V	O	C238	1-162-964-11	CERAMIC CHIP 0.001uF 10%	50V
O	C131	1-162-927-11	CERAMIC CHIP 100PF 5%	50V	O	C239	1-163-275-11	CERAMIC CHIP 0.001uF 5%	50V
O	C132	1-162-964-11	CERAMIC CHIP 0.001uF 10%	50V	O	C240	1-164-156-11	CERAMIC CHIP 0.1uF	25V
O	C133	1-162-964-11	CERAMIC CHIP 0.001uF 10%	50V	O	C241	1-162-964-11	CERAMIC CHIP 0.001uF 10%	50V
O	C134	1-162-964-11	CERAMIC CHIP 0.001uF 10%	50V	O	C242	1-163-021-91	CERAMIC CHIP 0.01uF 10%	50V
O	C136	1-162-964-11	CERAMIC CHIP 0.001uF 10%	50V	O	C243	1-163-021-91	CERAMIC CHIP 0.01uF 10%	50V
O	C137	1-163-275-11	CERAMIC CHIP 0.001uF 5%	50V	O	C244	1-162-927-11	CERAMIC CHIP 100PF 5%	50V
O	C138	1-163-021-91	CERAMIC CHIP 0.01uF 10%	50V	O	C245	1-162-927-11	CERAMIC CHIP 100PF 5%	50V
O	C139	1-163-021-91	CERAMIC CHIP 0.01uF 10%	50V	O	C247	1-162-964-11	CERAMIC CHIP 0.001uF 10%	50V
O	C140	1-163-021-91	CERAMIC CHIP 0.01uF 10%	50V	O	C248	1-162-964-11	CERAMIC CHIP 0.001uF 10%	50V
O	C144	1-162-964-11	CERAMIC CHIP 0.001uF 10%	50V	O	C249	1-162-964-11	CERAMIC CHIP 0.001uF 10%	50V
O	C145	1-162-964-11	CERAMIC CHIP 0.001uF 10%	50V	O	C250	1-162-970-11	CERAMIC CHIP 0.01uF 10%	25V
O	C146	1-162-964-11	CERAMIC CHIP 0.001uF 10%	50V	O	C306	1-164-156-11	CERAMIC CHIP 0.1uF	25V
O	C150	1-162-970-11	CERAMIC CHIP 0.01uF 10%	25V	O	C315	1-164-156-11	CERAMIC CHIP 0.1uF	25V
					O	C316	1-162-964-11	CERAMIC CHIP 0.001uF 10%	50V
					O	C317	1-124-778-00	ELECT CHIP 22uF 20%	6.3V
					O	C319	1-115-156-11	CERAMIC CHIP 1uF	10V
					O	C325	1-110-569-11	TANTAL. CHIP 47uF 20%	6.3V
					O	C326	1-164-156-11	CERAMIC CHIP 0.1uF	25V

SC	Ref. No.	Part No.	Description	Remark	SC	Ref. No.	Part No.	Description	Remark
O	C327	1-162-964-11	CERAMIC CHIP 0.001uF 10%	50V	O	C663	1-126-209-11	ELECT CHIP 100uF 20%	4V
O	C404	1-125-837-91	CERAMIC CHIP 1uF 10%	6.3V	O	C664	1-117-808-91	CERAMIC CHIP 10uF 10%	10V
O	C406	1-125-837-91	CERAMIC CHIP 1uF 10%	6.3V	O	C665	1-162-962-11	CERAMIC CHIP 470PF 10%	50V
O	C407	1-128-004-11	ELECT CHIP 10uF 20%	16V	O	C666	1-124-779-00	ELECT CHIP 10uF 20%	16V
O	C408	1-125-837-91	CERAMIC CHIP 1uF 10%	6.3V	O	C690	1-162-970-11	CERAMIC CHIP 0.01uF 10%	25V
O	C409	1-128-004-11	ELECT CHIP 10uF 20%	16V	O	C692	1-162-970-11	CERAMIC CHIP 0.01uF 10%	25V
O	C423	1-125-837-91	CERAMIC CHIP 1uF 10%	6.3V	O	C693	1-162-927-11	CERAMIC CHIP 100PF 5%	50V
O	C424	1-125-837-91	CERAMIC CHIP 1uF 10%	6.3V	O	C694	1-162-964-11	CERAMIC CHIP 0.001uF 10%	50V
O	C445	1-162-970-11	CERAMIC CHIP 0.01uF 10%	25V	O	C696	1-107-826-11	CERAMIC CHIP 0.1uF 10%	16V
O	C501	1-162-910-11	CERAMIC CHIP 5PF 0.25PF	50V	O	C697	1-162-970-11	CERAMIC CHIP 0.01uF 10%	25V
O	C502	1-164-156-11	CERAMIC CHIP 0.1uF	25V	O	C701	1-164-156-11	CERAMIC CHIP 0.1uF	25V
O	C508	1-126-206-11	ELECT CHIP 100uF 20%	6.3V	O	C702	1-115-156-11	CERAMIC CHIP 1uF	10V
O	C519	1-128-004-11	ELECT CHIP 10uF 20%	16V	O	C703	1-162-970-11	CERAMIC CHIP 0.01uF 10%	25V
O	C524	1-164-156-11	CERAMIC CHIP 0.1uF	25V	O	C704	1-162-967-11	CERAMIC CHIP 0.0033uF 10%	50V
O	C529	1-162-927-11	CERAMIC CHIP 100PF 5%	50V	O	C705	1-126-191-11	ELECT CHIP 0.47uF 20%	50V
O	C530	1-162-927-11	CERAMIC CHIP 100PF 5%	50V	O	C706	1-162-927-11	CERAMIC CHIP 100PF 5%	50V
O	C550	1-126-210-21	ELECT CHIP 220uF 20%	4V	O	C709	1-164-174-11	CERAMIC CHIP 0.0082uF 10%	25V
O	C550	1-126-246-11	ELECT CHIP 220uF 20%	4V	O	C714	1-162-968-11	CERAMIC CHIP 0.0047uF 10%	50V
O	C551	1-126-210-21	ELECT CHIP 220uF 20%	4V	O	C715	1-165-176-11	CERAMIC CHIP 0.047uF 10%	16V
O	C551	1-126-246-11	ELECT CHIP 220uF 20%	4V	O	C720	1-162-962-11	CERAMIC CHIP 470PF 10%	50V
O	C600	1-124-779-00	ELECT CHIP 10uF 20%	16V	O	C724	1-115-467-11	CERAMIC CHIP 0.22uF 10%	10V
O	C601	1-126-204-11	ELECT CHIP 47uF 20%	16V	O	C725	1-162-962-11	CERAMIC CHIP 470PF 10%	50V
O	C602	1-126-209-11	ELECT CHIP 100uF 20%	4V	O	C726	1-107-826-11	CERAMIC CHIP 0.1uF 10%	16V
O	C605	1-126-204-11	ELECT CHIP 47uF 20%	16V	O	C728	1-162-925-11	CERAMIC CHIP 68PF 5%	50V
O	C606	1-163-021-91	CERAMIC CHIP 0.01uF 10%	50V	O	C729	1-162-968-11	CERAMIC CHIP 0.0047uF 10%	50V
O	C607	1-164-156-11	CERAMIC CHIP 0.1uF	25V	O	C731	1-128-004-11	ELECT CHIP 10uF 20%	16V
O	C608	1-164-156-11	CERAMIC CHIP 0.1uF	25V	O	C733	1-115-467-11	CERAMIC CHIP 0.22uF 10%	10V
O	C609	1-163-021-91	CERAMIC CHIP 0.01uF 10%	50V	O	C736	1-104-847-11	TANTAL. CHIP 22uF 20%	4V
O	C617	1-126-205-11	ELECT CHIP 47uF 20%	6.3V	O	C737	1-104-847-11	TANTAL. CHIP 22uF 20%	4V
O	C618	1-162-921-11	CERAMIC CHIP 33PF 5%	50V	O	C738	1-104-752-11	TANTAL. CHIP 33uF 20%	6.3V
O	C620	1-163-275-11	CERAMIC CHIP 0.001uF 5%	50V	O	C739	1-162-964-11	CERAMIC CHIP 0.001uF 10%	50V
O	C621	1-115-156-11	CERAMIC CHIP 1uF	10V	O	C740	1-115-467-11	CERAMIC CHIP 0.22uF 10%	10V
O	C622	1-162-964-11	CERAMIC CHIP 0.001uF 10%	50V	O	C741	1-115-467-11	CERAMIC CHIP 0.22uF 10%	10V
O	C627	1-115-566-11	CERAMIC CHIP 4.7uF 10%	10V	O	C742	1-107-826-11	CERAMIC CHIP 0.1uF 10%	16V
O	C631	1-162-970-11	CERAMIC CHIP 0.01uF 10%	25V	O	C743	1-164-156-11	CERAMIC CHIP 0.1uF	25V
O	C635	1-162-970-11	CERAMIC CHIP 0.01uF 10%	25V	O	C744	1-162-970-11	CERAMIC CHIP 0.01uF 10%	25V
O	C637	1-126-210-21	ELECT CHIP 220uF 20%	4V	O	C745	1-164-156-11	CERAMIC CHIP 0.1uF	25V
O	C637	1-126-246-11	ELECT CHIP 220uF 20%	4V	O	C747	1-164-156-11	CERAMIC CHIP 0.1uF	25V
O	C639	1-162-970-11	CERAMIC CHIP 0.01uF 10%	25V	O	C749	1-164-156-11	CERAMIC CHIP 0.1uF	25V
O	C641	1-115-156-11	CERAMIC CHIP 1uF	10V	O	C761	1-162-968-11	CERAMIC CHIP 0.0047uF 10%	50V
O	C642	1-162-964-11	CERAMIC CHIP 0.001uF 10%	50V	O	C762	1-162-970-11	CERAMIC CHIP 0.01uF 10%	25V
O	C647	1-107-826-11	CERAMIC CHIP 0.1uF 10%	16V	O	C763	1-162-970-11	CERAMIC CHIP 0.01uF 10%	25V
O	C648	1-104-849-91	TANTAL. CHIP 22uF 20%	6.3V	O	C767	1-164-156-11	CERAMIC CHIP 0.1uF	25V
O	C648	1-104-852-11	TANTAL. CHIP 22uF 20%	6.3V	O	C768	1-115-156-11	CERAMIC CHIP 1uF	10V
O	C653	1-162-970-11	CERAMIC CHIP 0.01uF 10%	25V	O	C773	1-162-970-11	CERAMIC CHIP 0.01uF 10%	25V
O	C654	1-162-970-11	CERAMIC CHIP 0.01uF 10%	25V	O	C774	1-162-970-11	CERAMIC CHIP 0.01uF 10%	25V
O	C655	1-162-970-11	CERAMIC CHIP 0.01uF 10%	25V	O	C775	1-164-156-11	CERAMIC CHIP 0.1uF	25V
O	C656	1-162-970-11	CERAMIC CHIP 0.01uF 10%	25V	O	C776	1-115-566-11	CERAMIC CHIP 4.7uF 10%	10V
O	C657	1-162-970-11	CERAMIC CHIP 0.01uF 10%	25V			< TERMINAL BOARD >		
O	C658	1-162-970-11	CERAMIC CHIP 0.01uF 10%	25V	O	CN101	1-694-748-11	TERMINAL BOARD (FRONT)	
O	C659	1-162-970-11	CERAMIC CHIP 0.01uF 10%	25V	O	CN102	1-694-748-11	TERMINAL BOARD (FRONT)	
O	C660	1-163-021-91	CERAMIC CHIP 0.01uF 10%	50V					
O	C662	1-125-817-11	CERAMIC CHIP 10uF 10%	6.3V					

SC	Ref. No.	Part No.	Description	Remark	SC	Ref. No.	Part No.	Description	Remark	SC	Ref. No.	Part No.	Description	Remark	SC	Ref. No.	Part No.	Description	Remark
< CONNECTOR >					< FERRITE BEAD >					< IC >					< JACK >				
0	CN502	1-779-029-71	CONNECTOR, SQUARE TYPE 12P (AV MULTI OUT)		0	FB001	1-469-176-21	INDUCTOR, FERRITE BEAD		S	IC203	8-759-366-69	IC CXD8561Q		0	L607	1-412-960-21	INDUCTOR	56uH
0	CN502	1-779-029-81	CONNECTOR, SQUARE TYPE 12P (AV MULTI OUT)		0	FB003	1-469-324-21	FERRITE, EMI (SMD)		S	IC203	8-759-447-48	IC CXD8561BQ		0	L607	1-469-867-21	INDUCTOR	56uH
0	CN701	1-573-290-21	PIN, CONNECTOR (1.5mm) (SMD) 4P		0	FB102	1-469-110-21	FERRITE, EMI (SMD)		S	IC203	8-759-537-30	IC CXD8561CQ		0	L608	1-412-052-21	INDUCTOR CHIP	1uH
0	CN702	1-778-331-31	CONNECTOR, FFC/FPC 16P		0	FB117	1-469-667-21	FERRITE, EMI (SMD)		S	IC204	8-759-196-23	IC CY2081SL-509T (PAL)		0	L701	1-412-951-11	INDUCTOR	10uH
0	CN702	1-779-071-21	CONNECTOR, FFC/FPC 16P		0	FB118	1-469-667-21	FERRITE, EMI (SMD)		S	IC204	8-759-496-22	IC CY2081SL-500T (NTSC)		0	L701	1-469-525-91	INDUCTOR	10uH
< DIODE >					< IC LINK >					< TRANSISTOR >									
0	D002	8-719-056-80	DIODE UDZ-TE-17-5.1B		0	FB119	1-469-667-21	FERRITE, EMI (SMD)		S	IC204	8-759-639-47	IC BU2194AF-E2 (NTSC)		S△	PS004	1-576-123-21	LINK, IC (CCP2E20)	0.8A
0	D002	8-719-069-54	DIODE UDZS-TE17-5.1B		0	FB120	1-414-555-21	FERRITE, EMI (SMD)		S	IC204	8-759-639-48	IC BU2294AF-E2 (PAL)		S△	PS600	1-576-398-21	LINK, IC (CCP2E63)	2.5A
0	D002	8-719-976-99	DIODE DTZ5.1B		0	FB120	1-414-760-21	FERRITE, EMI (SMD)		S	IC304	8-759-598-56	IC MC68HC05G6-SC430943PBEB1 (102)		S△	PS601	1-576-123-21	LINK, IC (CCP2E20)	0.8A
0	D003	8-719-059-94	LED SML-010MT-T86 (I/⊂)		0	FB121	1-414-555-21	FERRITE, EMI (SMD)		S	IC304	8-759-598-57	IC MC68HC05G6-SC430944PBEB1 (101)		S△	PS603	1-576-123-21	LINK, IC (CCP2E20)	0.8A
0	D004	8-719-065-78	DIODE MAZF12000LS0		0	FB121	1-414-760-21	FERRITE, EMI (SMD)		S	IC310	8-759-342-01	IC MB814260-70PJER		S△	PS606	1-576-123-21	LINK, IC (CCP2E20)	0.8A
0	D004	8-719-073-98	DIODE DF2S12FU(TPH3)		0	FB122	1-414-555-21	FERRITE, EMI (SMD)	5%	1/16W	S	IC310	8-759-371-86	IC HM514260CJ7-Z		< RESISTOR >			
0	D004	8-719-158-49	DIODE RD12SB2		0	FB122	1-414-760-21	FERRITE, EMI (SMD)		S	IC310	8-759-395-64	IC HM514260CJ7T		0	Q002	8-729-010-05	TRANSISTOR	MSB709-RT1
0	D004	8-719-423-30	DIODE MA8120-TX		0	FB123	1-469-667-21	FERRITE, EMI (SMD)		S	IC310	8-759-460-86	IC MSM514260C-60JS		0	Q002	8-729-216-22	TRANSISTOR	2SA1162-G
0	D101	8-719-066-17	DIODE FTZ6.8E-T148		0	FB123	1-469-667-21	FERRITE, EMI (SMD)		S	IC310	8-759-473-03	IC HM514260DJ7-Z		0	Q002	8-729-424-02	TRANSISTOR	2SB709A-QRS-TX
0	D101	8-719-067-60	DIODE MAZL120D0LS0-TX/L		0	FB124	1-216-864-11	METAL CHIP	0	S	IC310	8-759-644-00	IC MSM514260D-60JS		0	Q003	8-729-024-88	TRANSISTOR	MUN2212T1
0	D101	8-719-071-17	DIODE HZM6.8ZFA1TR		0	FB401	1-500-113-22	BEAD, FERRITE (CHIP)		S	IC310	8-759-646-97	IC SDM4260CLU-6S		0	Q003	8-729-027-52	TRANSISTOR	DTC124EKA-T146
0	D101	8-719-072-85	DIODE NNCD6.2MG-T2		0	FB402	1-500-113-22	BEAD, FERRITE (CHIP)		S	IC310	8-759-656-05	IC MSM514260E-60JS		0	Q003	8-729-901-00	TRANSISTOR	DTC124EK
0	D101	8-719-077-00	DIODE HZM6.8ZMFATR		0	FB501	1-500-056-22	BEAD, FERRITE (CHIP)		S	IC601	8-759-391-69	IC MC78M05CDT		0	Q505	8-729-049-77	TRANSISTOR	HN1B01F-GR(T5LSONY)
0	D101	8-719-077-93	DIODE MAZL120H01S0		0	FB501	1-550-907-21	BEAD, FERRITE (CHIP)		S	IC601	8-759-691-00	IC JCP78M05CDTRK		0	Q602	8-729-015-33	TRANSISTOR	2SB1073-QR-TX
0	D103	8-719-067-40	DIODE STZ6.8N-T146		0	FB502	1-500-113-22	BEAD, FERRITE (CHIP)		S	IC602	8-759-598-12	IC LP2985IMSX-3.5		0	Q602	8-729-053-92	TRANSISTOR	2SB1424T100-QR
0	D103	8-719-067-59	DIODE MAZ9120D0LS0-TX/L		0	FB701	1-469-324-21	FERRITE, EMI (SMD)		S	IC606	8-759-346-78	IC TL594CD-R2 (-21)		0	Q602	8-729-422-87	TRANSISTOR	2SB1073-R
0	D103	8-719-071-15	DIODE HZM6.8ZWA1TL		0	FB702	1-469-324-21	FERRITE, EMI (SMD)		S	IC607	8-759-680-31	IC TL594CPWR (-31)		0	Q701	8-729-903-46	TRANSISTOR	2SB1132-P
0	D103	8-719-072-86	DIODE NNCD6.2MF-T1B		0	FB703	1-469-324-21	FERRITE, EMI (SMD)		S	IC722	8-759-496-42	IC BA5977FP-E2		0	Q701	8-729-920-79	TRANSISTOR	2SB1132-T100-QR
0	D103	8-719-077-94	DIODE MAZ9120H01S0		0	FB704	1-469-324-21	FERRITE, EMI (SMD)		S	IC722	8-759-677-90	IC BA5947FP-E2		< RESISTOR >				
0	D104	8-719-065-68	DIODE MAZF04700LS0		0	FB710	1-216-864-11	METAL CHIP	0	S	IC723	8-752-087-83	IC CXA2575N-T4		0	R001	1-216-864-11	METAL CHIP	0
< IC >					< COIL >					< JACK >									
0	D503	8-719-067-40	DIODE STZ6.8N-T146		S	IC002	8-759-197-94	IC M51957BFP-600D (-21)		0△	J001	1-695-565-11	JACK, DC (POLARITY UNIFIED TYPE) (DC IN 7.5V)		0	R001	1-216-864-11	METAL CHIP	0
0	D503	8-719-067-59	DIODE MAZ9120D0LS0-TX/L		S	IC002	8-759-635-83	IC M51957BFP (-21)		< COIL >									
0	D503	8-719-071-15	DIODE HZM6.8ZWA1TL		S	IC003	8-759-824-73	IC S-80913ANMP-DDA-T2 (-31)		0	L104	1-412-052-21	INDUCTOR CHIP	1uH	0	R009	1-216-005-00	METAL CHIP	15
0	D503	8-719-072-86	DIODE NNCD6.2MF-T1B		S	IC003	8-759-824-75	IC RN5VD13AA-TL (-31)		0	L106	1-412-052-21	INDUCTOR CHIP	1uH	0	R010	1-216-031-00	METAL CHIP	180
0	D503	8-719-077-94	DIODE MAZ9120H01S0		S	IC102	8-759-713-37	IC MSM534031E-40GS-KPR2 (101)		0	L203	1-469-667-21	FERRITE, EMI (SMD)		0	R011	1-216-031-00	METAL CHIP	180
0	D510	8-719-067-40	DIODE STZ6.8N-T146		S	IC102	8-759-713-38	IC MSM534031E-41GS-KPR2 (102)		0	L304	1-412-951-11	INDUCTOR	10uH	0	R011	1-216-864-11	METAL CHIP	0
0	D510	8-719-067-59	DIODE MAZ9120D0LS0-TX/L		S	IC103	8-759-486-62	IC CXD8606BQ		0	L304	1-469-525-91	INDUCTOR	10uH	0	R011	1-218-839-11	METAL CHIP	470
0	D510	8-719-071-15	DIODE HZM6.8ZWA1TL		S	IC106	8-759-377-18	IC TC51V18325BJ-60S(YE)		0	L304	1-469-866-21	INDUCTOR	10uH	0	R012	1-218-861-11	METAL CHIP	3.9K
0	D510	8-719-072-86	DIODE NNCD6.2MF-T1B		S	IC106	8-759-496-87	IC T7X16(YEL)		0	L401	1-412-951-11	INDUCTOR	10uH	0	R013	1-218-859-11	METAL CHIP	3.3K
0	D510	8-719-077-94	DIODE MAZ9120H01S0		S	IC106	8-759-496-87	IC T7X16(YEL)		0	L401	1-469-525-91	INDUCTOR	10uH	0	R014	1-216-029-00	METAL CHIP	150
0	D511	8-719-065-78	DIODE MAZF12000LS0		S	IC106	8-759-563-28	IC KM432V515J-6T		0	L401	1-469-866-21	INDUCTOR	10uH	0	R015	1-216-029-00	METAL CHIP	150
0	D511	8-719-073-98	DIODE DF2S12FU(TPH3)		S	IC201	8-759-369-81	IC KM4132G271Q-12		0	L601	1-412-052-21	INDUCTOR CHIP	1uH	0	R104	1-216-801-11	METAL CHIP	22
0	D511	8-719-158-49	DIODE RD12SB2		S	IC201	8-759-434-13	IC MB81G83222-012PQ		0	L602	1-412-052-21	INDUCTOR CHIP	1uH	0	R107	1-216-009-91	RES-CHIP	22
0	D511	8-719-423-30	DIODE MA8120-TX		S	IC201	8-759-483-19	IC uPD481850GF-A12-JBT-T		0	L603	1-409-531-41	INDUCTOR	22uH	0	R115	1-216-801-11	METAL CHIP	22
0	D601	8-719-060-81	DIODE MA735-TX		S	IC201	8-759-531-34	IC MB81G83222-010PQ-A		0	L603	1-424-674-11	INDUCTOR	22uH	0	R132	1-216-821-11	METAL CHIP	1K
0	D601	8-719-067-83	DIODE RB161L-40TE25		S	IC201	8-759-531-35	IC MB81G83222-012PQ-A		0	L604	1-412-052-21	INDUCTOR CHIP	1uH	0	R133	1-216-821-11	METAL CHIP	1K
< ON BOARD CONTACT >					< COIL >					< JACK >									
0	ET101	1-694-592-31	ON BOARD CONTACT		S	IC201	8-759-533-56	IC KM4132G271BQ-10		0	L606	1-412-951-11	INDUCTOR	10uH	0	R134	1-216-821-11	METAL CHIP	1K
0	ET102	1-694-592-31	ON BOARD CONTACT		S	IC201	8-759-536-44	IC HM5283206FP-10C		0	L606	1-469-866-21	INDUCTOR	10uH	0	R135	1-216-821-11	METAL CHIP	1K
					S	IC201	8-759-536-45	IC HM5283206FP-12C		0	L606	1-469-866-21	INDUCTOR	10uH	0	R136	1-216-821-11	METAL CHIP	1K
					S	IC201	8-759-547-87	IC MSM54V25632A-10GSBK4		0	L606	1-412-052-21	INDUCTOR CHIP	1uH	0	R137	1-216-805-11	METAL CHIP	47
					S	IC201	8-759-585-07	IC MSM54V25632A-10AGBK4		0	L606	1-412-951-11	INDUCTOR	10uH	0	R138	1-216-805-11	METAL CHIP	47
					S	IC201	8-759-665-63	IC TK5283206QF-12		0	L606	1-469-525-91	INDUCTOR	10uH	0	R150	1-216-805-11	METAL CHIP	47
					S	IC201	8-759-665-63	IC TK5283206QF-12		0	L606	1-469-866-21	INDUCTOR	10uH	0	R154	1-216-815-11	METAL CHIP	330

The components identified by mark △ or dotted line with mark. △ are critical for safety. Replace only with part number specified.	Les composants identifiés par une marque △ sont critiques pour la sécurité. Ne les remplacer que par une pièce portant le numéro spécifié.
-----------------------------------------------------------------------------------------------------------------------------------	--------------------------------------------------------------------------------------------------------------------------------------------

SC	Ref. No.	Part No.	Description	Remark	SC	Ref. No.	Part No.	Description	Remark
0	R204	1-216-801-11	METAL CHIP	22 5% 1/16W	0	R717	1-216-809-11	METAL CHIP	100 5% 1/16W
0	R205	1-216-813-11	METAL CHIP	220 5% 1/16W	0	R723	1-216-839-11	METAL CHIP	33K 5% 1/16W
0	R206	1-216-801-11	METAL CHIP	22 5% 1/16W	0	R725	1-216-829-11	METAL CHIP	4.7K 5% 1/16W
0	R207	1-216-829-11	METAL CHIP	4.7K 5% 1/16W	0	R727	1-216-835-11	METAL CHIP	15K 5% 1/16W
0	R215	1-216-829-11	METAL CHIP	4.7K 5% 1/16W	0	R732	1-216-835-11	METAL CHIP	15K 5% 1/16W
0	R338	1-216-830-11	METAL CHIP	5.6K 5% 1/16W	0	R733	1-216-845-11	METAL CHIP	100K 5% 1/16W
0	R340	1-216-801-11	METAL CHIP	22 5% 1/16W	0	R734	1-216-825-11	METAL CHIP	2.2K 5% 1/16W
0	R341	1-216-801-11	METAL CHIP	22 5% 1/16W	0	R738	1-218-707-11	RES-CHIP	4.3K 5% 1/16W
0	R342	1-216-801-11	METAL CHIP	22 5% 1/16W	0	R738	1-220-371-91	RES-CHIP	4.3K 5% 1/16W
0	R425	1-216-827-11	METAL CHIP	3.3K 5% 1/16W	0	R739	1-216-823-11	METAL CHIP	1.5K 5% 1/16W
0	R426	1-216-827-11	METAL CHIP	3.3K 5% 1/16W	0	R740	1-216-821-11	METAL CHIP	1K 5% 1/16W
0	R429	1-216-809-11	METAL CHIP	100 5% 1/16W	0	R741	1-216-834-11	METAL CHIP	12K 5% 1/16W
0	R430	1-216-809-11	METAL CHIP	100 5% 1/16W	0	R745	1-218-884-11	METAL CHIP	36K 0.5% 1/16W
0	R501	1-216-825-11	METAL CHIP	2.2K 5% 1/16W	0	R746	1-218-884-11	METAL CHIP	36K 0.5% 1/16W
0	R527	1-216-839-11	METAL CHIP	33K 5% 1/16W	0	R747	1-216-009-91	RES-CHIP	22 5% 1/10W
0	R528	1-216-839-11	METAL CHIP	33K 5% 1/16W	0	R748	1-218-883-11	METAL CHIP	33K 0.5% 1/16W
0	R529	1-216-824-11	METAL CHIP	1.8K 5% 1/16W	0	R749	1-218-883-11	METAL CHIP	33K 0.5% 1/16W
0	R541	1-216-824-11	METAL CHIP	1.8K 5% 1/16W	0	R750	1-216-009-91	RES-CHIP	22 5% 1/10W
0	R542	1-216-833-11	RES-CHIP	10K 5% 1/16W	0	R769	1-218-286-11	RES-CHIP	91 5% 1/16W
0	R543	1-218-857-11	METAL CHIP	2.7K 0.5% 1/16W (102)	0	R770	1-216-845-11	METAL CHIP	100K 5% 1/16W
0	R543	1-218-859-11	METAL CHIP	3.3K 0.5% 1/16W (101)	0	R774	1-216-864-11	METAL CHIP	0 5% 1/16W
0	R606	1-216-821-11	METAL CHIP	1K 5% 1/16W (-21)	0	R775	1-216-841-11	METAL CHIP	47K 5% 1/16W
0	R606	1-216-845-11	METAL CHIP	100K 5% 1/16W (-31)	0	R783	1-216-829-11	METAL CHIP	4.7K 5% 1/16W
0	R640	1-216-864-11	METAL CHIP	0 5% 1/16W	0	R793	1-216-845-11	METAL CHIP	100K 5% 1/16W
0	R641	1-216-864-11	METAL CHIP	0 5% 1/16W	0	R795	1-216-833-11	RES-CHIP	10K 5% 1/16W
0	R642	1-216-295-11	SHORT	0	0	R901	1-216-295-11	SHORT	0 (101)
0	R661	1-216-041-00	METAL CHIP	470 5% 1/10W	0	R902	1-216-295-11	SHORT	0 (102)
0	R662	1-218-860-11	METAL CHIP	3.6K 0.5% 1/16W	< RESISTOR BLOCK >				
0	R663	1-218-842-11	METAL CHIP	620 0.5% 1/16W	0	RB120	1-234-030-11	RES, NETWORK (CHIP TYPE)	22
0	R664	1-216-864-11	METAL CHIP	0 5% 1/16W	0	RB121	1-234-030-11	RES, NETWORK (CHIP TYPE)	22
0	R665	1-220-760-11	RES-CHIP	0.2 5% 1/2W	0	RB122	1-234-030-11	RES, NETWORK (CHIP TYPE)	22
0	R666	1-216-864-11	METAL CHIP	0 5% 1/16W	0	RB123	1-233-955-11	RES, NETWORK (CHIP TYPE)	100
0	R667	1-216-827-11	METAL CHIP	3.3K 5% 1/16W	0	RB124	1-233-967-11	RES, NETWORK (CHIP TYPE)	10K
0	R668	1-216-813-11	METAL CHIP	220 5% 1/16W	0	RB125	1-234-030-11	RES, NETWORK (CHIP TYPE)	22
0	R681	1-216-041-00	METAL CHIP	470 5% 1/10W	0	RB126	1-233-959-21	RES, NETWORK (CHIP TYPE)	470
0	R691	1-218-874-11	METAL CHIP	13K 0.5% 1/16W	0	RB201	1-234-030-11	RES, NETWORK (CHIP TYPE)	22
0	R692	1-218-851-11	METAL CHIP	1.5K 0.5% 1/16W	0	RB202	1-234-030-11	RES, NETWORK (CHIP TYPE)	22
0	R693	1-216-853-11	METAL CHIP	470K 5% 1/16W	0	RB501	1-234-482-21	RES, NETWORK (CHIP TYPE)	75
0	R694	1-216-841-11	METAL CHIP	47K 5% 1/16W	< SWITCH >				
0	R695	1-216-845-11	METAL CHIP	100K 5% 1/16W	0	S001	1-762-745-22	SWITCH, PUSH (I/⏏/RESET)	
0	R696	1-216-830-11	METAL CHIP	5.6K 5% 1/16W	0	S301	1-771-764-11	SWITCH, PUSH (1 KEY) (CD DOOR OPEN/CLOSE DET)	
0	R701	1-216-829-11	METAL CHIP	4.7K 5% 1/16W	< VIBRATOR >				
0	R702	1-216-835-11	METAL CHIP	15K 5% 1/16W	S	X201	1-767-783-21	VIBRATOR, CRYSTAL (14.318182MHz) (NTSC)	
0	R703	1-216-844-11	METAL CHIP	82K 5% 1/16W	S	X201	1-767-940-22	VIBRATOR, CRYSTAL (17.73447MHz) (PAL)	
0	R704	1-216-833-11	RES-CHIP	10K 5% 1/16W	*****				
0	R705	1-216-845-11	METAL CHIP	100K 5% 1/16W					
0	R706	1-216-853-11	METAL CHIP	470K 5% 1/16W					
0	R710	1-216-833-11	RES-CHIP	10K 5% 1/16W					
0	R712	1-216-827-11	METAL CHIP	3.3K 5% 1/16W					
0	R714	1-216-827-11	METAL CHIP	3.3K 5% 1/16W					

SC	Ref. No.	Part No.	Description	Remark
ACCESSORIES & PACKING MATERIALS				
*****				
<SCPH-101>				
0	△ AC	1-476-409-11	ADAPTOR, AC (SCPH-113)	
0	AV	1-792-028-11	CORD, CONNECTION (A/V CABLE)	
0	CONT	1-757-144-11	CORD, CONNECTION (ANALOG CONTROLLER)	
0	MANUAL	3-062-611-11	MANUAL, INSTRUCTION (ENGLISH,FRENCH, SPANISH)	
<SCPH-102>				
0	△ AC	1-476-410-11	ADAPTOR, AC (SCPH-114) (102C)	
0	△ AC	1-476-411-11	ADAPTOR, AC (SCPH-115) (102B)	
0	△ AC	1-476-412-11	ADAPTOR, AC (SCPH-116) (102A)	
0	AV	1-792-028-11	CORD, CONNECTION (A/V CABLE)	
0	CONT	1-757-144-21	CORD, CONNECTION (ANALOG CONTROLLER)	
0	△ CONV	1-573-291-11	CONNECTOR, CONVERSION (102C)	
0	MANUAL	3-062-611-21	MANUAL, INSTRUCTION (ENGLISH) (102A)	
0	MANUAL	3-062-611-31	MANUAL, INSTRUCTION (ENGLISH) (102B)	
0	MANUAL	3-062-611-41	MANUAL, INSTRUCTION (FRENCH,SPANISH, GERMAN,ITALIAN,DUTCH,PORTUGUESE) (102C)	
0	RF	1-476-040-31	ADAPTOR, RF (102B)	

The components identified by mark △ or dotted line with mark. △ are critical for safety. Replace only with part number specified.	Les composants identifiés par une marque △ sont critiques pour la sécurité. Ne les remplacer que par une pièce portant le numéro spécifié.
-----------------------------------------------------------------------------------------------------------------------------------	--------------------------------------------------------------------------------------------------------------------------------------------

The components identified by mark △ or dotted line with mark. △ are critical for safety. Replace only with part number specified.	Les composants identifiés par une marque △ sont critiques pour la sécurité. Ne les remplacer que par une pièce portant le numéro spécifié.
-----------------------------------------------------------------------------------------------------------------------------------	--------------------------------------------------------------------------------------------------------------------------------------------